



**"Feel Smart & Secured"**

## Overview Design Of Dual Lens CCTV Camera





"Feel Smart & Secured"



# DUAL LENS WIFI CAMERA



"Feel Smart & Secured"

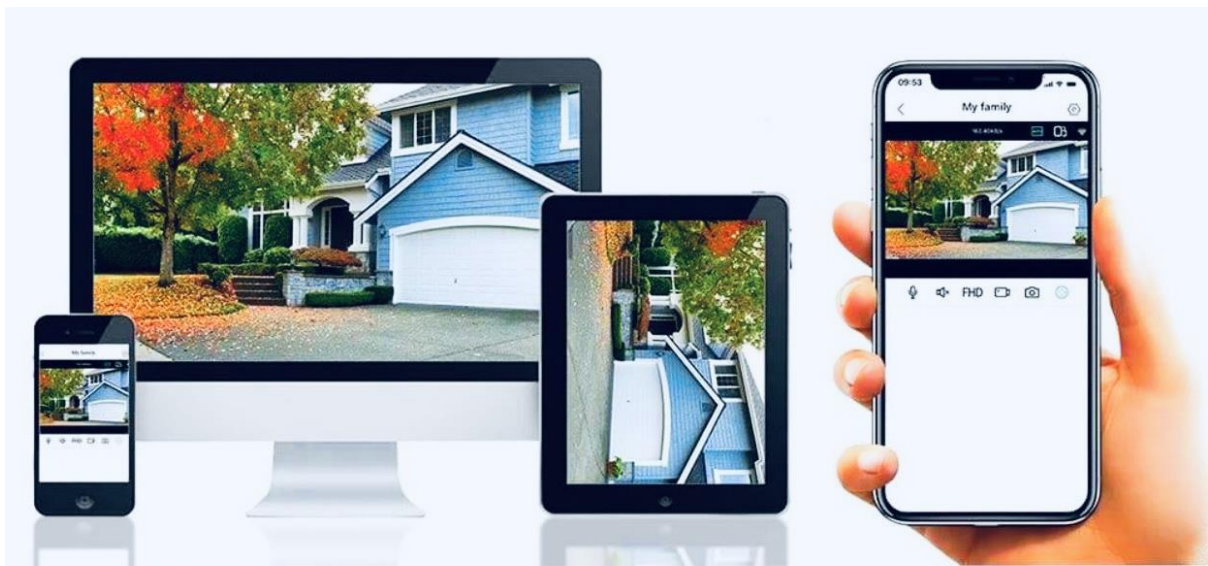
## SPECIFICATION

- MODEL : NTS- HN-300W- Q6
- Set dual light alert mode
- 3MP + 3 MP
- Purchase 4G Data Guide
- Dual Lens
- Outdoor PTZ
- H.265/H.264. 4K video display via mainstream
- DC12V 2A
- LAN cable & crystal head fault test
- Digital cable tracer
- Built-in WIFI max distance 20M
- Working temperature: -10°C~+50°C
- Working humidity: 30%~90%
- 1 year quality warranty
- Set the Humanoid Warning Alarm Function
- Time alarm setup
- Dual light 24 hrs color
- SD support 128GB Max
- Night Vison
- Smart Light
- Two way audio
- Light alarm
- Quick setup
- App : iCSee
- IP67 Waterproof

**MRP 7,900 /-**



"Feel Smart & Secured"



Easy Setup For Multi-platform

-  iphone
-  Andorid
-  Windows
-  Web

The complex block features a white and black security camera mounted on a wooden wall on the left. To the right, on a light blue background, is the text "Easy Setup For Multi-platform" and four platform icons: Apple iPhone, Android, Windows, and a Web icon.





"Feel Smart & Secured"

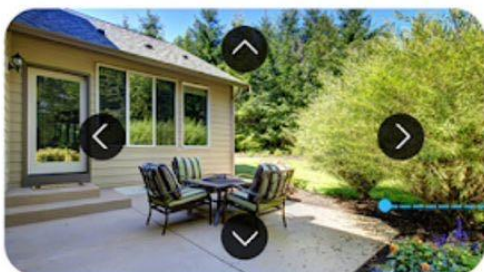


"Feel Smart & Secured"

## New model Wireless PTZ Camera **3MP + 3MP**

Wi-Fi version

Dual-lens dual-screen preview



### Two-way audio real time chat

Real-time online communication, anytime anywhere interaction



### Real-Time Motion Detection Alarm

Alarm notifications will be sent to you when motion detected



Motion detection



Push notification

