

MINI PTZ WIFI CAMERA

P6SLite



(Apple IOS, Android Sweep Code Adaptive).



MINI PTZ WIFI CAMERA

2.5 inch HD Mini PTZ Camera product specifications

1.Product Name:2.5 inch HD dual board module(WIFI plusRJ45 plus TF).

2. Product motherboard model:RS-H676S-A0-A/T31N series 2.5 inch /2MP/(with WIFI-RJ45 plus dual light source).

TF card plate model:RS-H675S-A0-B 2.5 inch expansion board / (with TF plate).

3.Product features and functions :

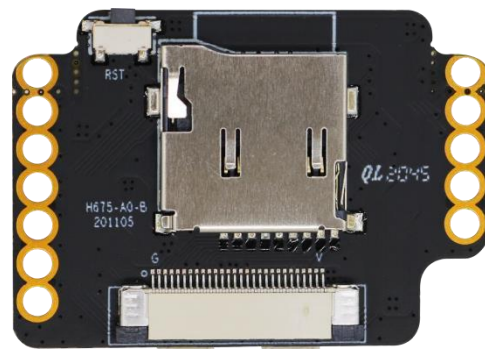
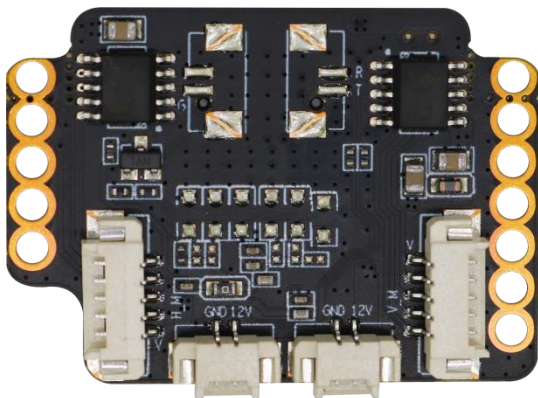
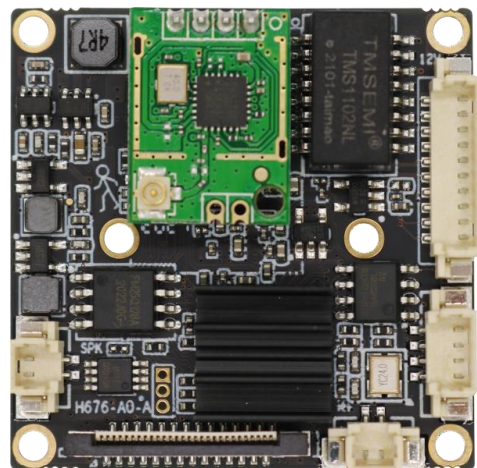
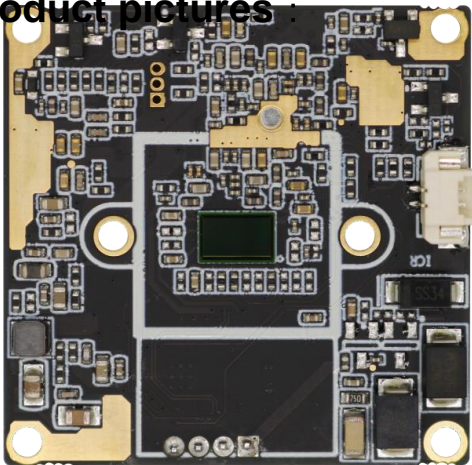
- ★ Real-time HD monitoring with T31N Series AI DSP, 1/2.9 CMOS Sensor ,1920 x 1080 resolution.
- ★ support 6 kinds of polygon area arming function, while supporting a variety of alarm linkage (trigger mail/trigger FTP/trigger SD card capture, video/joint push/sound output) function.
- ★ support AI automatic high sensitivity humanoid tracking and sound alarm, red and blue flash function (can support wired alarm output),support 20 kinds of voice broadcasting and custom voice function, support spam classification voice broadcast, while supporting intelligent humanoid accurate positioning playback, support AP hot spot mode direct connection, no external network, suitable for no external network environment (such as construction sites, fish ponds, etc.).
- ★ support RJ45 function, cross-network segment automatic mapping function (with RS series NVR), support WIFI module and external POE function, the default H.265 coding code rate is lower, image quality is clearer, less bandwidth, storage time is longer and lower cost, image picture is more smooth.
- ★ support cloud NVR and Easyvms clients for centralized management.
- ★ support ONVIF standard protocol and P6S private protocol, support TF card (FAT32 format, support 128GB) or mobile phone local storage video, can be compatible with a variety of TF cards on the market, support audio and video data FTP upload (via APP) free backup data.
- ★ APP supports 17 Chinese words ([Chinese Simplified/Chinese Traditional/English/Finnish/Korean/French/Portuguese/Thai/Spanish/Polish/Indonesian/German](#) /[Italian/Russian/Japanese/Vietnamese/Arabic/Turkish](#)), gesture amplification, support for preset setup, support for up to 6 presets, and two Chinese voicecasts (Chinese/English).
- ★ module on-board amplifier IC, can effectively eliminate echo, suppress noise, prevent distortion and other phenomena, horn recommended to use 80 / 1.5W.
- ★ support cloud storage, device sharing (support sharing multiple friends) and device management identity transfer.
- ★ support humanoid alarm APP message push.

MINI PTZ WIFI CAMERA

4. Product advantages :

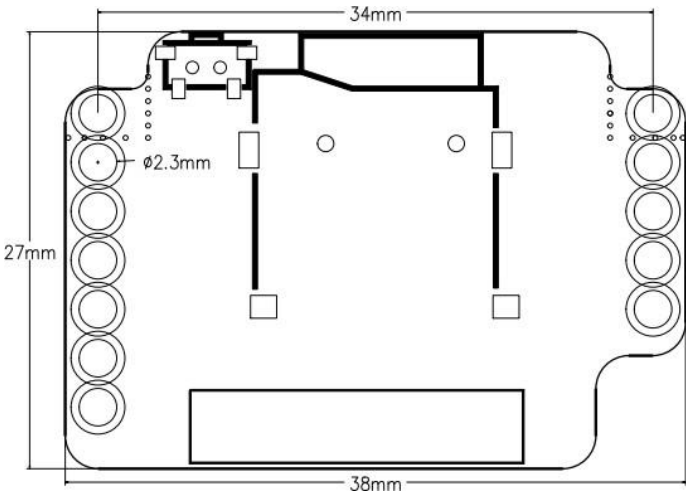
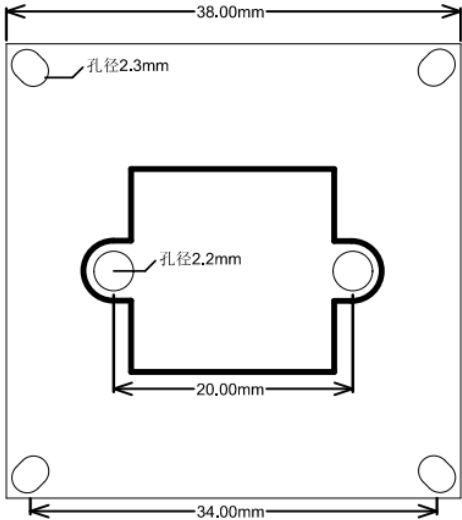
- ★ Based on the T31N AI deep learning algorithm and equipped with the Re-view AI humanoid algorithm, it can accurately detect humanoids, which is more accurate than mobile detection alarm.
- ★ APP multi-functional: video stream frame rate and other settings, timed capture, alarm settings (trigger recording, trigger FTP, joint push), video settings, OSD settings and other functions.
- ★ network adaptation: the device will be based on the current network conditions, choose the most appropriate stream for transmission, resulting in a perfect user experience.
- ★ humanoid tracking currently supports 3 humanoid boxes, supports the setting of channel OSD and monitoring timestamp display, day and night mode settings, IR-CUT reverse and switching time settings.

5. Product pictures :

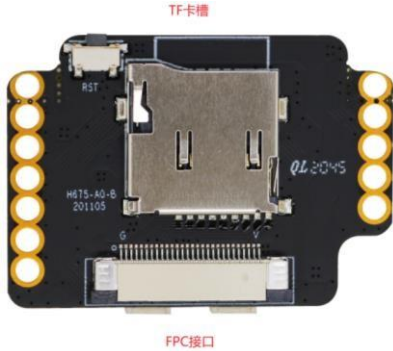
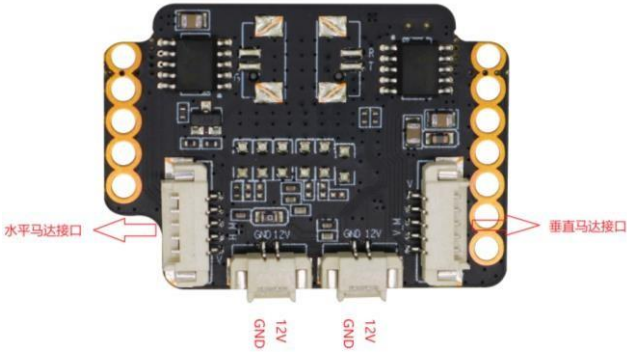
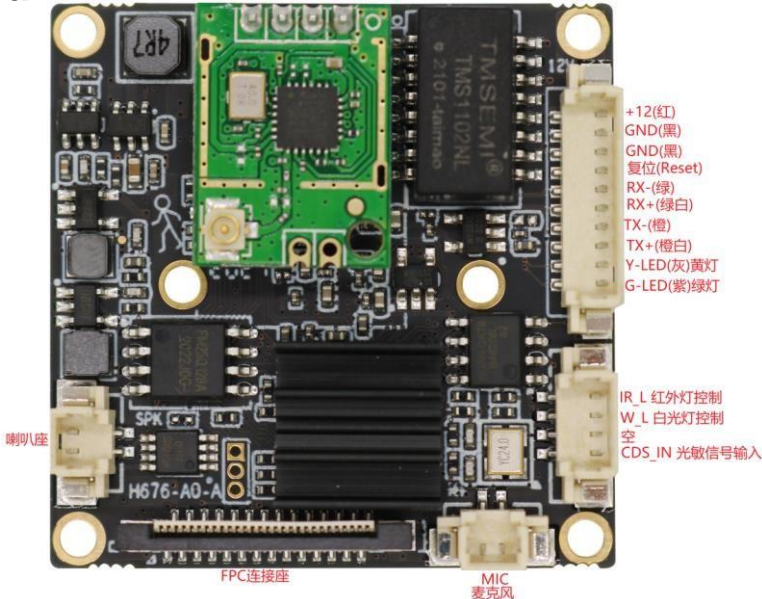


MINI PTZ WIFI CAMERA

6、Product structure:(mm)



7、Product wiring diagram :



MINI PTZ WIFI CAMERA

9、 Technical parameters :

products	Motherboard model	RS-H676S-A0-A/T31N
	TF card board model	RS-H675S-A0-B
system	Processor	T31N
	operating system	Embedded LINUX operating system
Video	Sensor	1/2.9 CMOS Sensor
	Video coding standards	H.264/H.265
	System-based	PAL 50HZ/NTSC 60HZ
	Effective resolution	2MP (1920*1080) /1280*720
	Resolution	2.0 M pixels
	Video frame rate	1-25fps (default is 25fps)
	Video stream	256kbps-12288kbps(Default variable code rate, customization supported) (APP)
	SNR	SNR≥69dB
	Minimum illumination	Day mode 1Lux, night vision mode 0.01Lux
	Day and night mode	Automatic (passive mode)/day/night/automatic (active mode)/timing
	AWB/3D noise reduction/AGC/Wide dynamic/Exposure time	AUTO
	Automatic Electronic Shutter (AES)	AUTO/ 1/25-1/10,000 second
	Video output	Easytool/EasyVMS client/mobile APP
	Mobile detection	support
The capture function	support	
audio	Coding standards	G.711U
	Audio input	Passive microphone MIC
	Audio output	External 8Ω/MAX 1.5W speaker
Video management	Record	Manual recording, alarm recording, timing recording
	Save the video	TF card/PC/NVR
alarm	Alarm in/out	Supports alarm output
	Alarm trigger	Mobile detection alarms, speaker alarms, alarm recordings, screenshots, emails

MINI PTZ WIFI CAMERA

Internet	Network protocols	HTTP,TCP/IP,IPV4,UPNP,RTSP, UDP, SMTP, NTP, DHCP, DNS, IP Filter, PPPOE, DDNS, FTP,IP Search(Support P6S IP camera, DVR, NVS and etc.)
other	TF card capacity	Up to 128GB (universal FAT32 format)
	Operating voltage	Standard DC-12V (wide voltage 10-16V)
	Operating current	140mA ±10mA
	The working environment	-20°C --- +70°C
size	mainboard	38mm*38mm
	TF card board	38mm*27mm
	ICR/LENS hole pitch	20mm

Other matters:

The contents of this manual are only intended to guide the user, and we will update the contents of this manual in accordance with the enhancement or change of product features, and will regularly improve and update the software features described in this manual, the updated content will be reflected in the new version of the manual without notice